

Multiple Target Manipulator

PLD

Target Manipulator



FEATURES:

- Six 1" Targets mounted in spring-loaded mechanical mounts for reproducible positioning
- Mechanisms all shielded from deposition and heat sources
- Stepper motor target selection axis for automated target positioning
- Target rotation and target glide for uniform target erosion
- Control electronics with RS-232 communications
- UHV compatible
- Custom configurations available



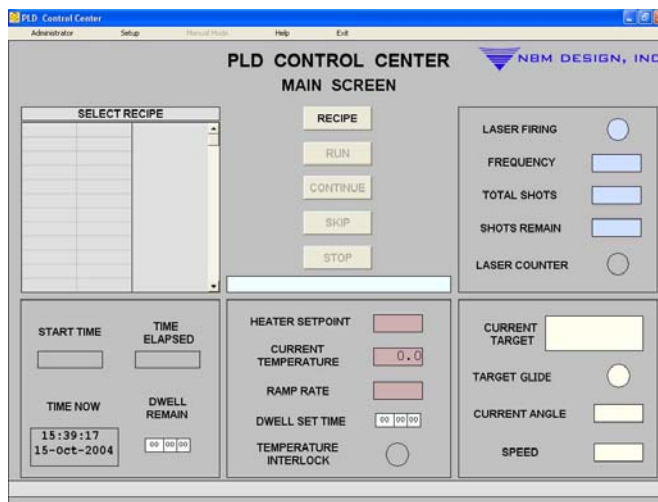
Target automation software integrated with laser shot and heater temperature control.



NBM's target manipulator is a high-performance vacuum manipulator with a robust design and a simplified maintenance scheme. It features multiple targets that can be positioned in the deposition aperture using the included software control package. Each target is secured in a spring loaded holder so that the targets can be resurfaced and mounted in the same position without any further position verification.

Customizations available:

- Alternate target to flange distances.
- Shield cooling
- Automation package



NBM DESIGN, INC.
P.O. BOX 249
BEL AIR, MD 21014
1-866-638-0234 (TOLL FREE)
PHONE: 410-638-7720
FAX: 410-638-0234
WWW.NBMDESIGN.COM

